

One-piece Medallions

TIP: *Fypon Medallions come standard with a ready-to-install, double UV protective white finish. You can customize your Medallion with latex or oil-base paints, faux finishes, gold leaf, sponging, feathering or marbleizing techniques to create your own, one-of-a-kind masterpiece. If you decide to paint, stain or faux finish your Medallion, it may work best to do this before installation. This can speed up the project by preventing any spills onto the ceiling or surrounding wall.*

INSTALLATION INSTRUCTIONS

MATERIALS NEEDED



STEP 4



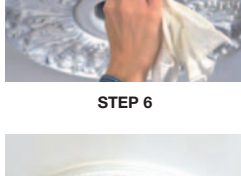
STEP 5



STEP 6



STEP 7



STEP 8

IMPORTANT

When installing around or near any electrical fixture, make sure the power supply is turned off at the fuse box or circuit breaker. Be sure to follow local electrical and building codes.

1. CUT THE CENTER HOLE

NOTE: *If you are installing a Medallion with a center hole pre-cut, you may proceed to step three, below. If you are installing a solid Medallion around a fixture, you need to make a center hole to match the base of the fixture. If possible, use the fixture base itself as a template. Otherwise, carefully measure the base of the fixture. Determine the size hole you will need to cut. Transfer your measurement to the Medallion, drawing a circle around the center point. Use a drill to make a starting hole. Using a hole saw, keyhole saw or jig saw, carefully cut out the opening.*

2. CHECK THE FIT AND TRIM ACCORDINGLY

Set your Medallion in place to check its fit. If installing around an electrical box, make sure there is enough clearance for any hardware connecting the box to your fixture. Trim to fit as needed.

3. INSERT SCREWS

Start trim head screws into the Medallion's front side, equally spaced around the outside of the Medallion, staying 1"-2" from the edge. No pre-drilling is necessary. Place the screws in a detailed area, if possible. This will help to hide them.

4. APPLY ADHESIVE

For smooth ceilings and surfaces, apply a 1/4" bead of adhesive to the back of the Medallion about 1/2" from the edge. For textured ceilings and surfaces, apply the adhesive bead about 2" from the edge.

5. INSTALL MEDALLION

Put your Medallion into place and drive the trim head that they countersink to a depth of 1/8."

6. REMOVE EXCESS ADHESIVE AND FILL HOLES

With a damp cloth, remove and blend any excess adhesive that squeezed out. Fill screw holes with caulk or wood filler and smooth or texture them as desired.

7. SAND IMPERFECTIONS AND FINISH AS DESIRED

After the Medallion has dried in place for 2 hours or more, any minor imperfections may be sanded. You can then also finish the Medallion with any quality latex or oil base paint, etc. (SEE 'TIP' ABOVE).

8. REINSTALL FIXTURE

A removed fixture should be reinstalled once any final finish has dried. Because some Medallions are thicker than others, you may need to use a longer threaded tube in order to achieve the desired result.

- Ladder
- Tape Measure
- Screwdriver
- Paintbrush
- Safety Glasses
- Painter's Caulk, Spackle or Wood Filler
- Sandpaper
- Threaded Tube (not provided)
- Trim Head Screws (not provided)
- Latex or Oil Base Paint
- PL Premium Adhesive

You may not need these materials, depending upon the type of Medallion you are installing and your desired result.



STEP 8

USING CORROSION-RESISTANT FASTENERS AND PL PREMIUM ADHESIVE

Always use corrosion-resistant mechanical fasteners (nails or screws) and PL Premium Adhesive when installing Fypon products. This combination provides a secure, long lasting bond. Countersink all fasteners about 1/8 inch and fill with exterior grade white spackle. If desired, sand any minor imperfections and topcoat with a quality exterior latex or oil base paint. Fypon exterior millwork installations should be finished using a quality, exterior grade silicone caulk to prevent water infiltration behind siding, windows and doors. Some exterior millwork installations, in particular new construction (before siding is applied) may require a J-channel and/or flashing to prevent water infiltration. Installers must determine which installation technique is best for the specific situation.

IMPORTANT:

Please read these installation guidelines thoroughly before beginning installation. Please note that these guidelines are provided only to assist with the installation of Fypon mouldings and millwork products. Modified procedures may be required in order to meet specific situations, unique applications and local building codes. The manufacturer does not under any circumstances warrant the installation of its products. Be sure to wear appropriate protective clothing, gloves and safety glasses when working with any tools. Installer should check for and relocate all electrical wiring within the proposed installation area, as needed (be sure to disconnect all electric power before working with any electrical wiring and follow all applicable local electrical codes and safety procedures).